



MEDICAL X-RAY FILM

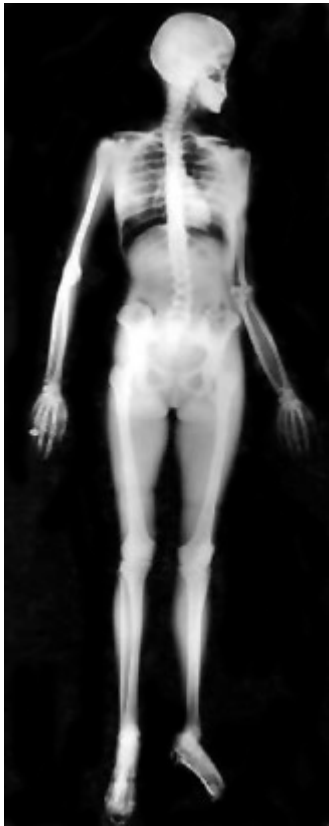


This medical green / blue sensitive x-ray film (**KODAK group**, is a high contrast and high clarity film, which is applicable for green / blue light sensitization-developing screen.

The film attention contrast ratio and balance of time for exposure, the popularizing nature greatly in using. The definition is high, the resolution ratio is strong and can meet the characteristics of different radiography technologies. It can satisfy user's requisition.

Its specific curve can shoot to the chest, abdominal cavity and oesophagus, can offer the best bone structure information and keep visual cartilaginous tissue.

Can be used for manual or automatic processing.



Specification

GREEN SENSIVITY:
BLUE SENSIVITY:

XOE
XB-M

- 18 X 24 cm
- 24 X 30 cm
- 30 X 40 cm
- 35 X 35 cm
- 35 X 43 cm

* The special specification can cuts according to customer's demand