



# DIGITAL ULTRASOUND DP-8800 +

## DIGITAL ULTRASONIC DIAGNOSTIC IMAGING SYSTEM



### General Descriptions

Imaging Mode	B, B/B, B/M, M
Gray Scale	256
Display	14" non-interlaced
<b>Multifrequency probes:</b>	Frequency 2 ~ 10 MHz
Scanning Angle	from 40 to 128 degree (depending on probes)
Scanning Depth (mm)	from 25.9 to 246 (depending on probes)
Beam-forming	HiFi Digital Beam-former (HDBF)
	Pixel based Dynamic Receiving Focusing (PDRF)
	Full field Read time Dynamic Aperture (FRDA)
	Up to 16 zone transmitting focusing
Pre-processing	Dynamic range
	Edge enhancement Frame correlation
	Smooth Line correlation
	Scanning angle selection
	High resolution High frame select
Post-processing	Grey map Gamma correction Rejection
	Left/Right & Up/Down reverse
Working voltage	100~240V 50Hz/60Hz
Dimensions	480mm (W) X 640mm (L) X 1250mm (H)
Weight:	55 Kg



# DIGITAL ULTRASOUND DP-8800 +

## Functions

Cine Loop:	128-frame Cine loop memory
Built in image archive	Storage over 100.000 still images
Zoom:	Panoramic zoom in real-time and frozen

## Measurement & Calculation

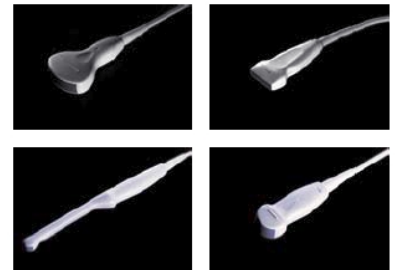
B-mode	Distance, circumference, area, volume, angle, histogram, profile, S%
M-mode:	Distance, time, velocity, heart rate (2 cycles)
Software packages:	Abdomen, gynaecology, obstetrics, IVF, cardiology, urology, small parts, peripheral vessels,

## Other

CD-R/W, USB, serial and parallel port, video output
---

## Probe Types

<b>Multifréquency probe</b> Convex	CA 3.5MHz/R50 (2.5/3.5/5.0MHz)
<b>Multifréquency probe</b> Micro Convex	CA 6.5MHz/R15 (5.0/6.5/7.5MHz)
<b>Multifréquency probe</b> Micro Convex	CA 3.5MHz/R20 (2.5/3.5/5.0MHz)
<b>Multifréquency probe</b> Endo	EV 6.5MHz/R10 (5.0/6.5/7.5MHz)
<b>Multifréquency probe</b> Linear	LA 7.5MHz/L38 (5.0/7.5/10.0MHz)



## Standard Configurations:

DP-8800 Main Unit with 2 transducer connectors + 14" Non-interlaced Monitor + 128-frame CINELOOP + Built-in Imaging Archive + CD-R/W + All Measurement & Calculation Software Packages + Electronic Convex array Multifréquency probe CA 3.5MHz/R50 (2.5/3.5 MHz)

## Options:

SONY UP-895MD Video Printer,  
Needle-guided Bracket, footswitch, probes (see probes type), DICOM